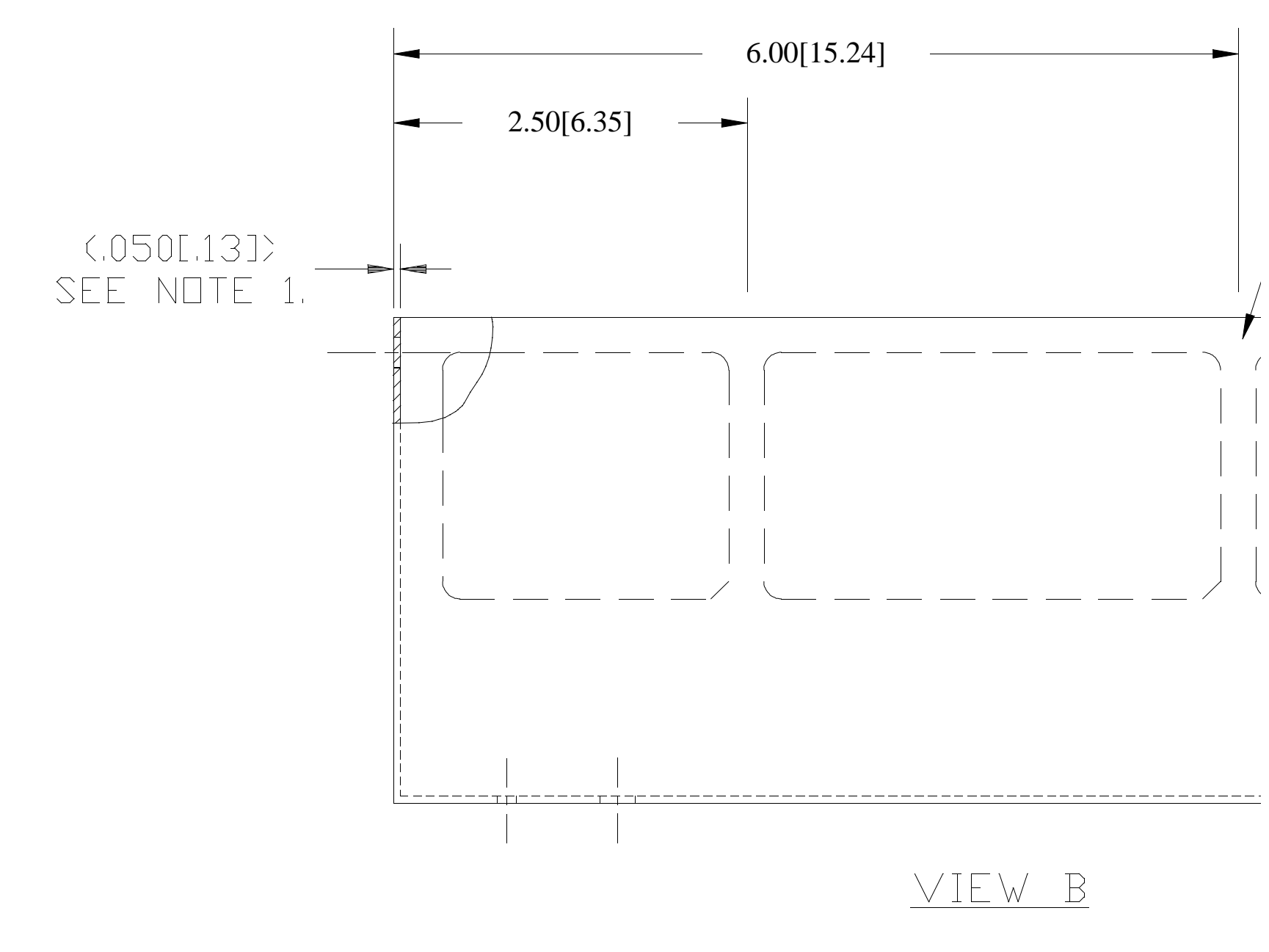
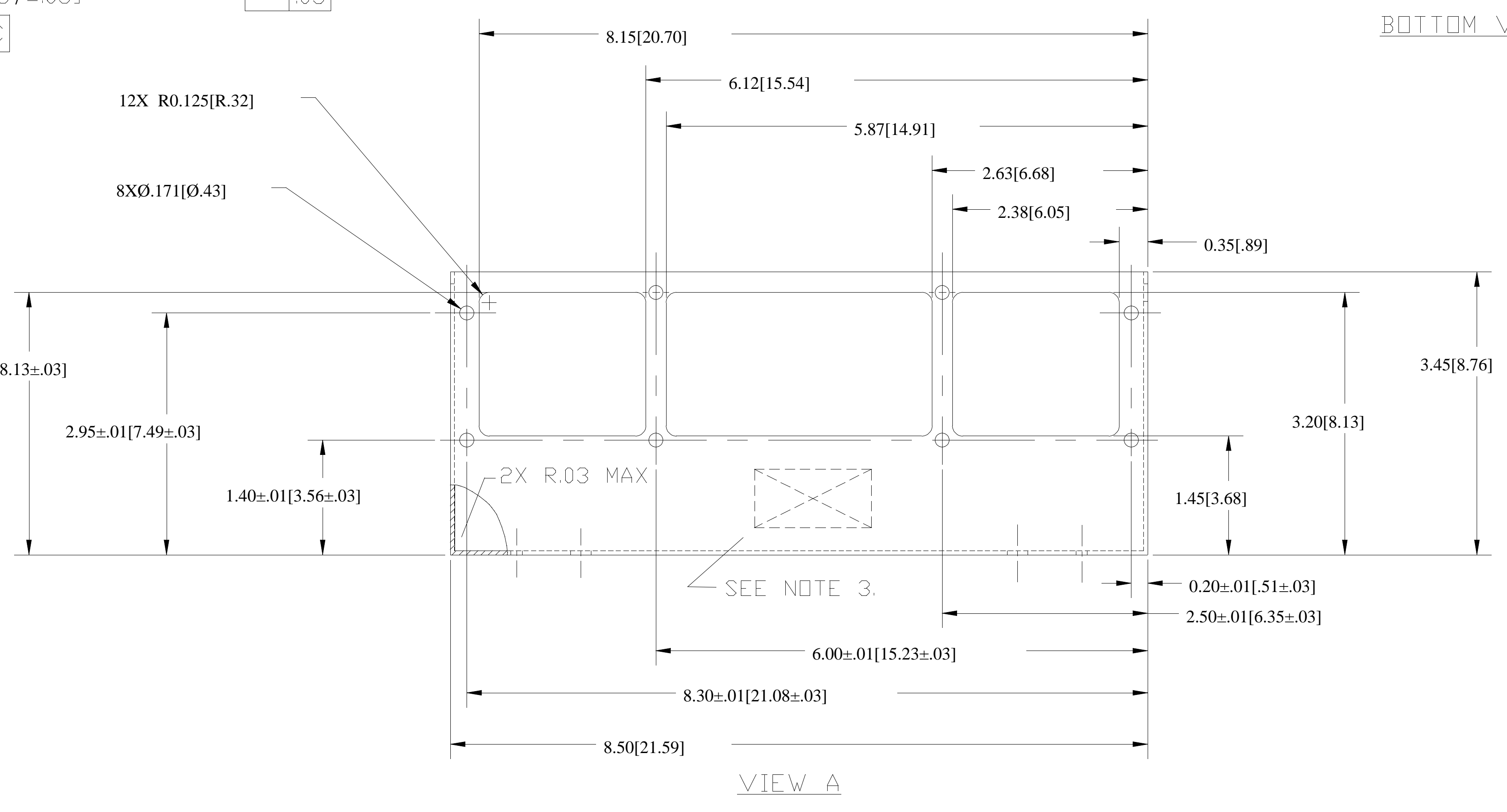
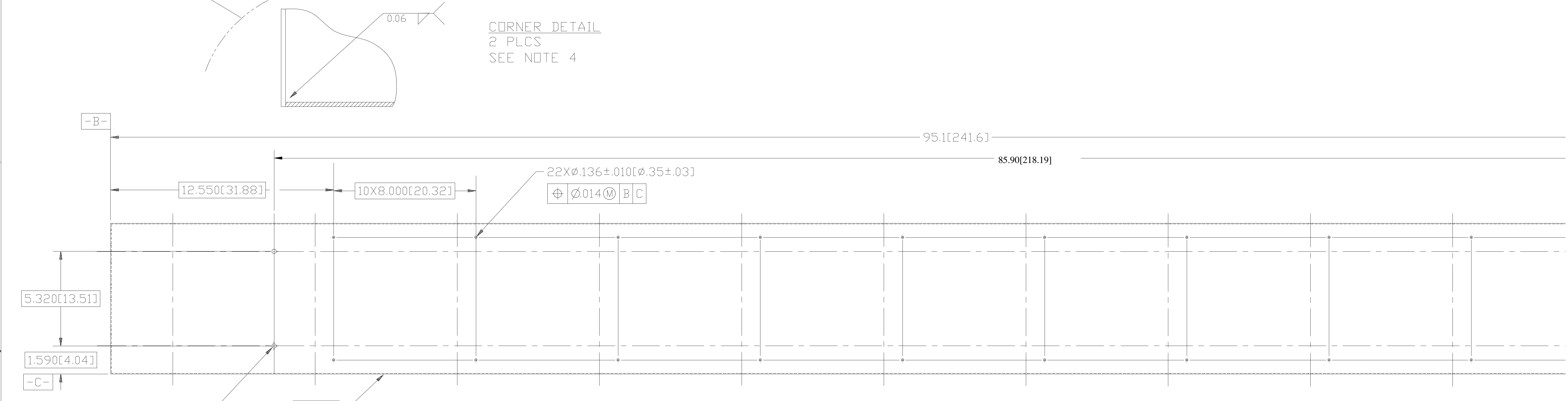
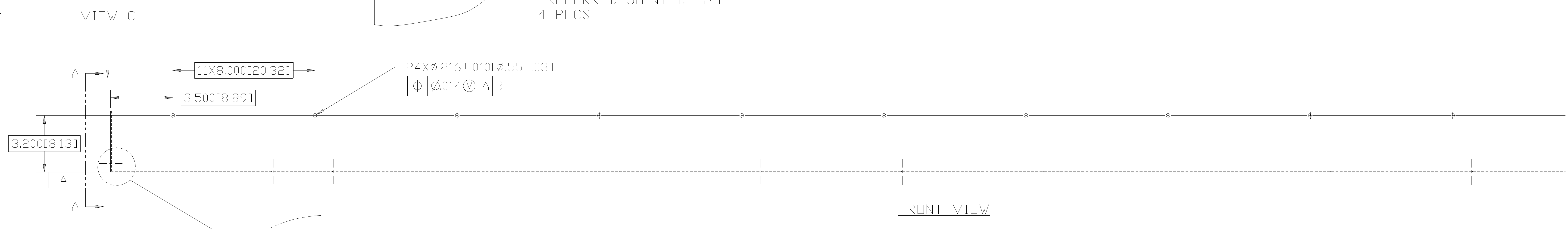
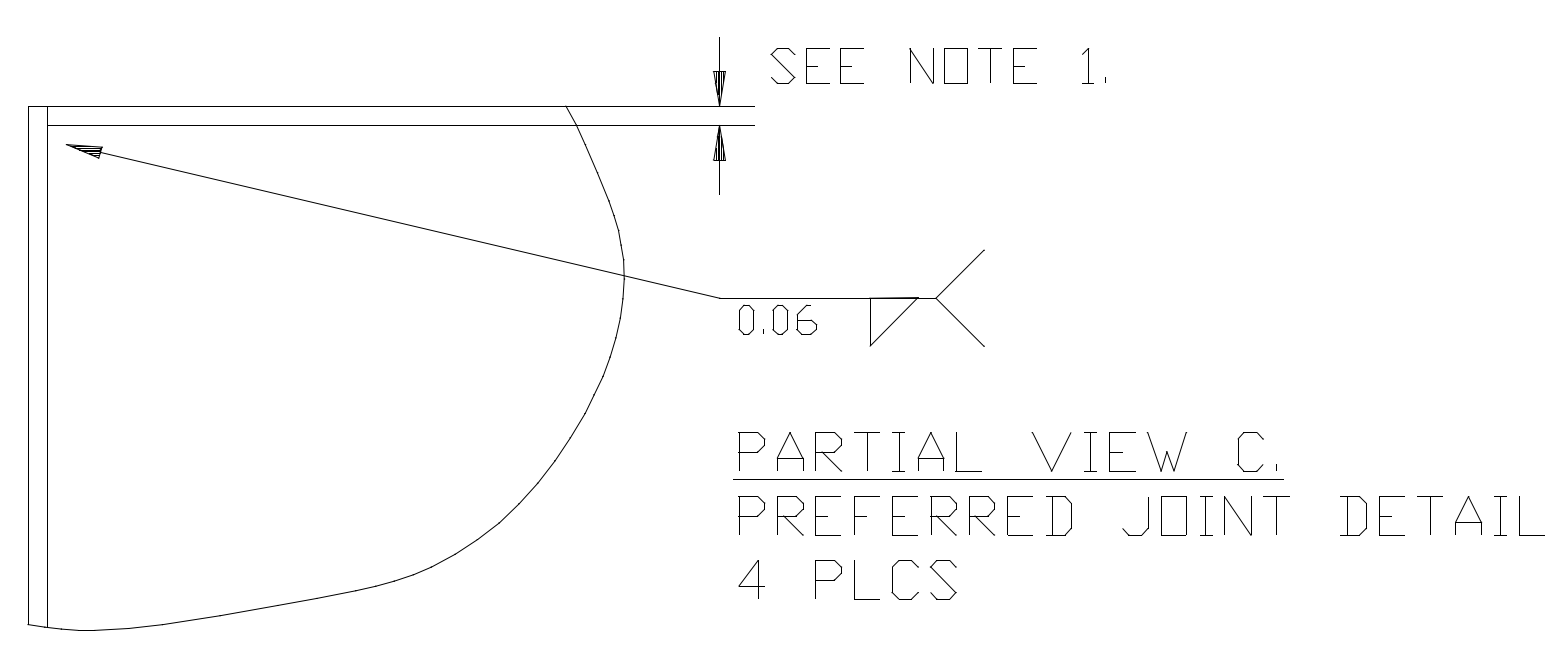


L	HWT	GSM	03/19/20
C	WJL	GWE	03/19/20



- NOTES:
- 1: MATERIAL: .050" 5052 H32 ALUMINUM SHEET STOCK
 - 2: PARTS ARE TO BE DEGREASED AND INDIVIDUALLY WRAPPED IN PLASTIC
 - 3: PARTS TO BE SERIALIZED, PARTS NO. 1 TO BE MARKED "001", PART NO. 2, "002" ETC. LOCATE SERIAL NO. APPROXIMATELY AS SHOWN. USE .500" HIGH CHARACTERS, USE BLACK EPOXY INK.
 - 4: ALTERNATE DESIGN MUST BE APPROVED BY RICE COGNIZANT ENGINEER.

DO NOT SCALE DRAWING	SIZE E	STAR	DRAWN BY HWT
FINISH		INTERPRET IN ACCORDANCE WITH ASME Y14.5M - 1994	COGNIZANT ENG GSM
ALL SCREW THREADS PER ANSI 14.6 BREAK EDGES 0.000[.05] MAX ON MACHINE WORK. REMOVE BURRS, LOOSE SCALE AND WELD SPATTER REFERENCE - ANSI 14.5 & B46.1		UNLESS OTHERWISE SPECIFIED DIMENSIONS ARE INCHES/OUT DIMENS. TOLERANCES: Ø(.X) = ± .005(.13) Ø(.X) = ± .002(.05) Ø(.X) = ± .001(.02) ANGULAR TOLERANCE ± 1°	PRODUCTION APP

8

7

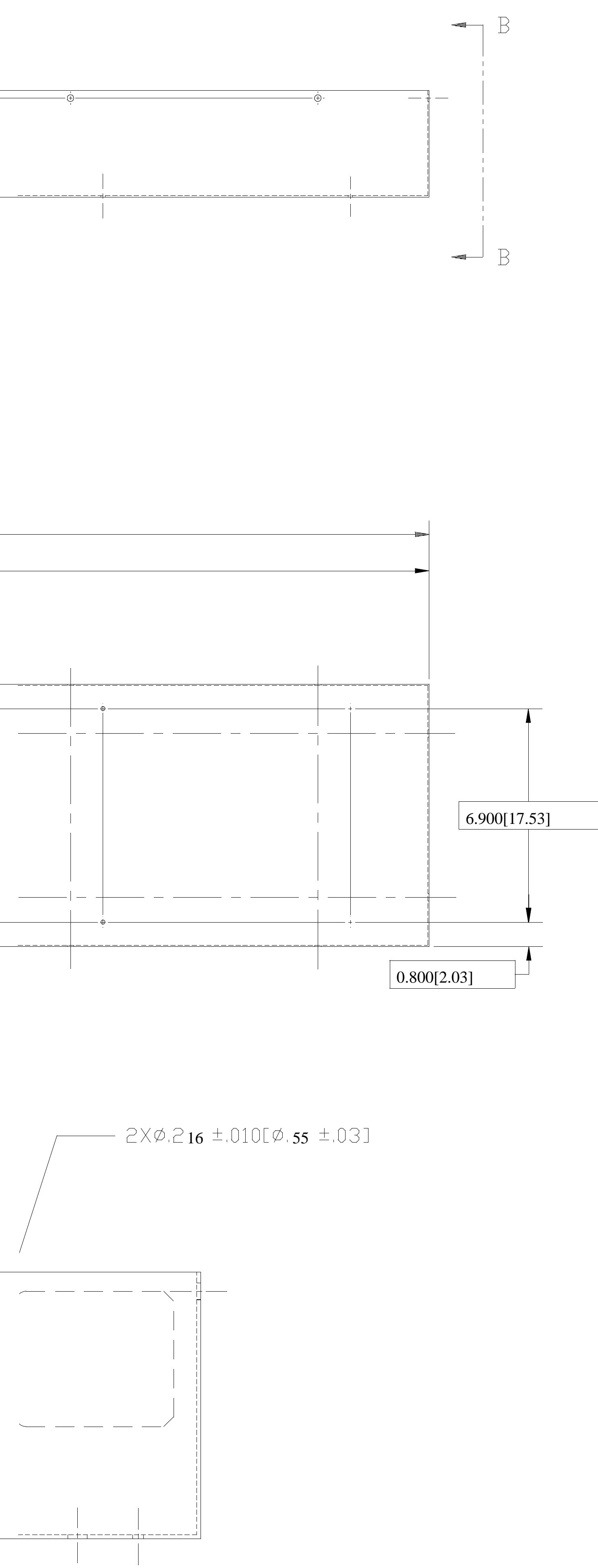
6

5

4

3

TRIGGER TRAY REDESIGNED TO ACCOMMODATE NEW CONNECTORS
 FIXED DIMS IN VIEWS A AND BOTTOM, ADDED DIMS TO VIEW B



H
G
F
E
D
C
B

	STAR DRAWING #	REV	RHC DRAWING #
	TRG001-E-1	C	
SCALE	DWG CODE/REV	RH DRAWING #	REV.
NTS		CTB-M-150	C
DATE	Bonner Nuclear Laboratory		
5/3/97	Rice University - Houston, Texas		
DATE	STAR RIBS Level 2		
5/3/97	TRIGGER		
DATE	STAR RIBS Level 2		
	CTB		
	TRAY		

A

2 | 1