

REVISION RECORD			
LTR	ECO NO:	APPROVED:	DATE:

CENTER PLATE TEMPERATURE SENSOR  
 OUTPUT 10 mV/K, ZERO IS AT 0 DEG. C.  
 OVERTEMP TRIP IS SET AT 40 DEG. C.

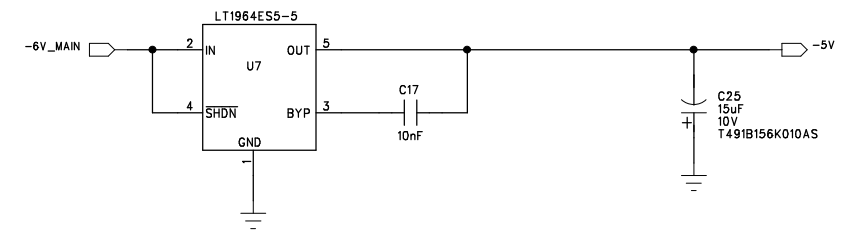
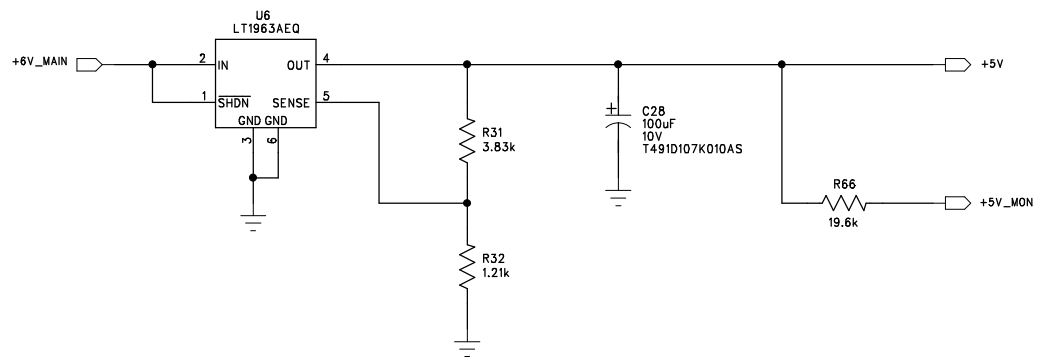
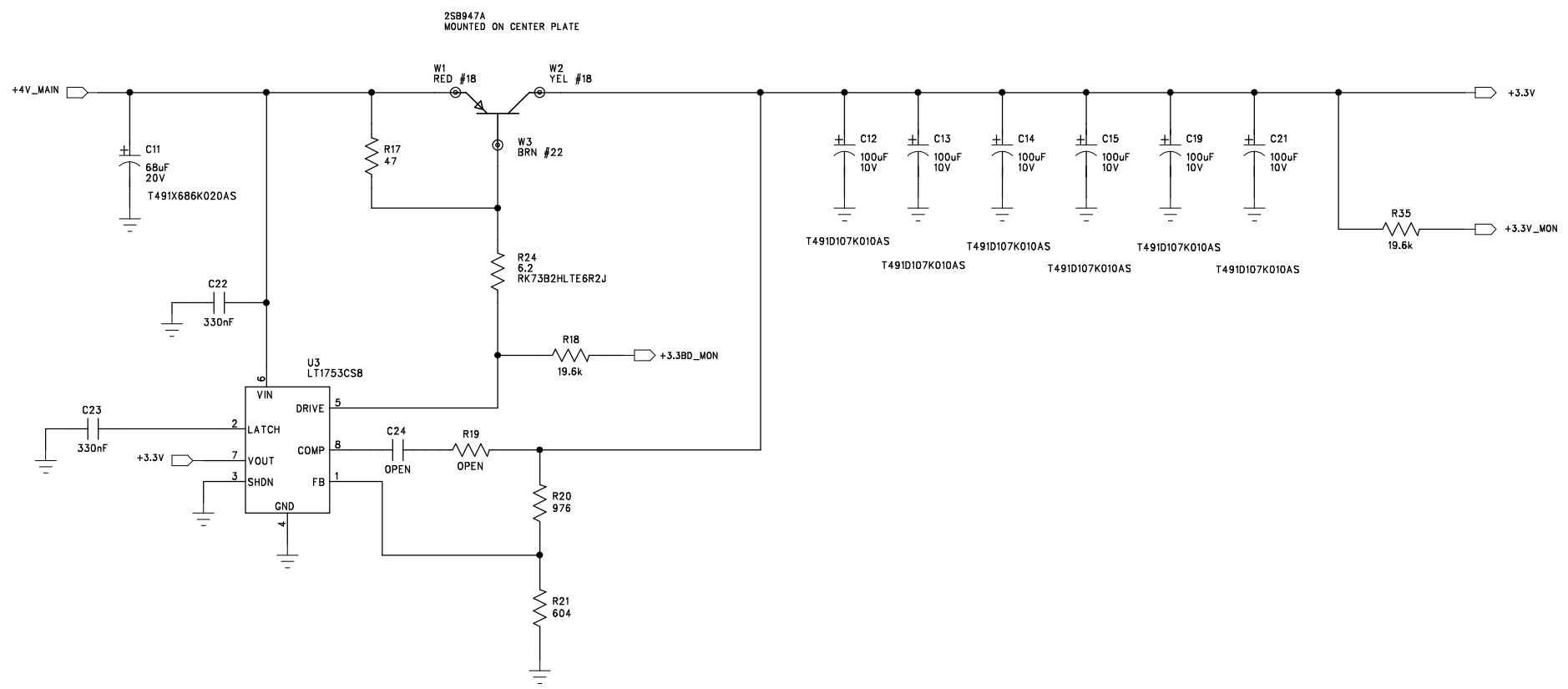
COMPANY: INDIANA UNIVERSITY CYCLOTRON FACILITY			
TITLE: STAR ENDCAP FEE MUX POWER DISTRIBUTION POWER ENTRY AND PROTECTION			
DRAWN: D. FORD, G. VISSER	DATED: 28 APR 03	CODE:	SIZE:
CHECKED:	DATED:	DRAWING NO:	REV:
QUALITY CONTROL:	DATED:		
RELEASED: G. VISSER	DATED: 30 APR 03	SCALE:	SHEET: 1 OF 3

6 5 4 3 2 1

REVISION RECORD			
LTR	ECO NO:	APPROVED:	DATE:

D  
C  
B  
A

D  
C  
B  
A



COMPANY: INDIANA UNIVERSITY CYCLOTRON FACILITY			
TITLE: STAR ENDCAP FEE MUX POWER DISTRIBUTION VOLTAGE REGULATORS			
CODE:	SIZE:	DRAWING NO:	REV:
SCALE:		SHEET: 2 OF 3	

DRAWN: D. FORD, G. VISSER	DATED: 28 APR 03
CHECKED:	DATED:
QUALITY CONTROL:	DATED:
RELEASED: G. VISSER	DATED: 30 APR 03

6

5

4

3

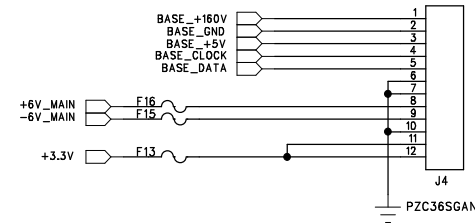
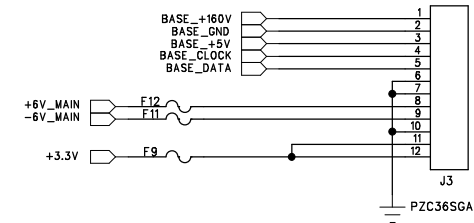
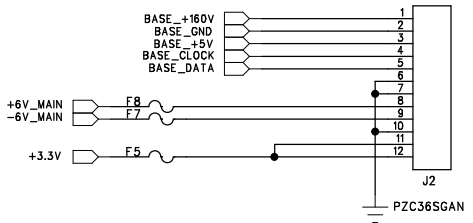
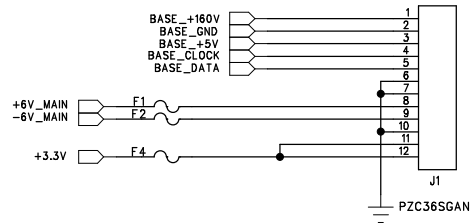
2

1

REVISION RECORD			
LTR	ECO NO:	APPROVED:	DATE:

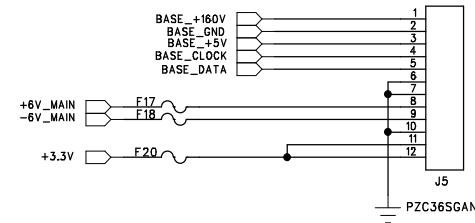
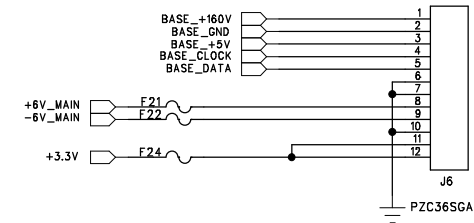
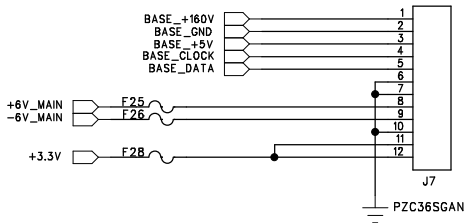
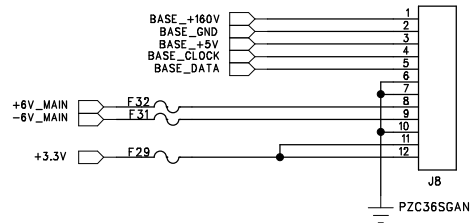
FUSES ARE 0.90A POLYFUSES, #RUSB090

D



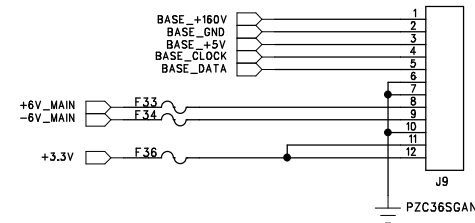
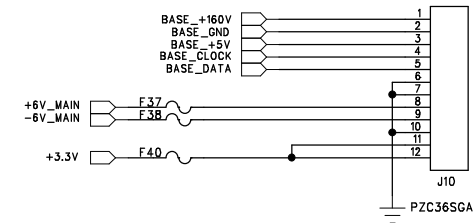
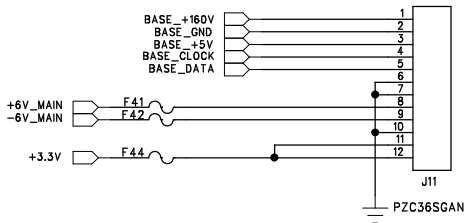
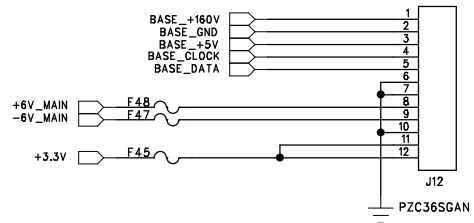
D

C



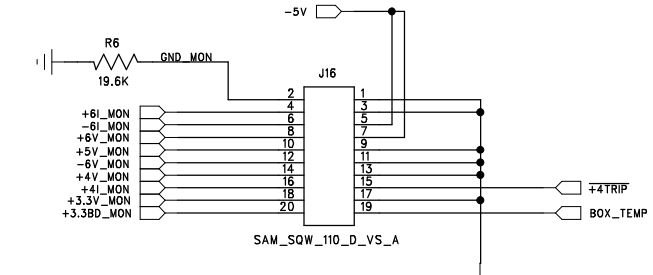
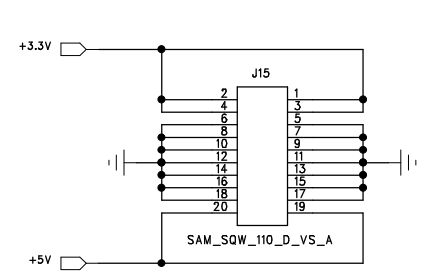
C

B



B

A



COMPANY: INDIANA UNIVERSITY CYCLOTRON FACILITY			
TITLE: STAR ENDCAP FEE MUX POWER DISTRIBUTION BOARD			
POWER AND STATUS OUTPUTS			
DRAWN: DOUG FORD	DATED: 28 APR 03	CODE:	SIZE:
CHECKED:	DATED:	DRAWING NO:	REV:
QUALITY CONTROL:	DATED:	SCALE:	
RELEASED: G. VISSER	DATED: 30 APR 03	SHEET: 3 OF 3	

A