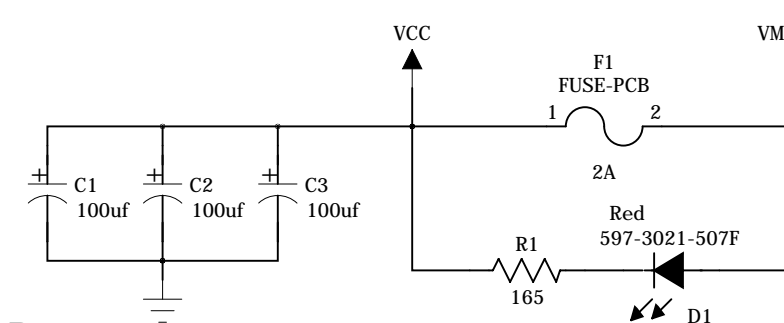


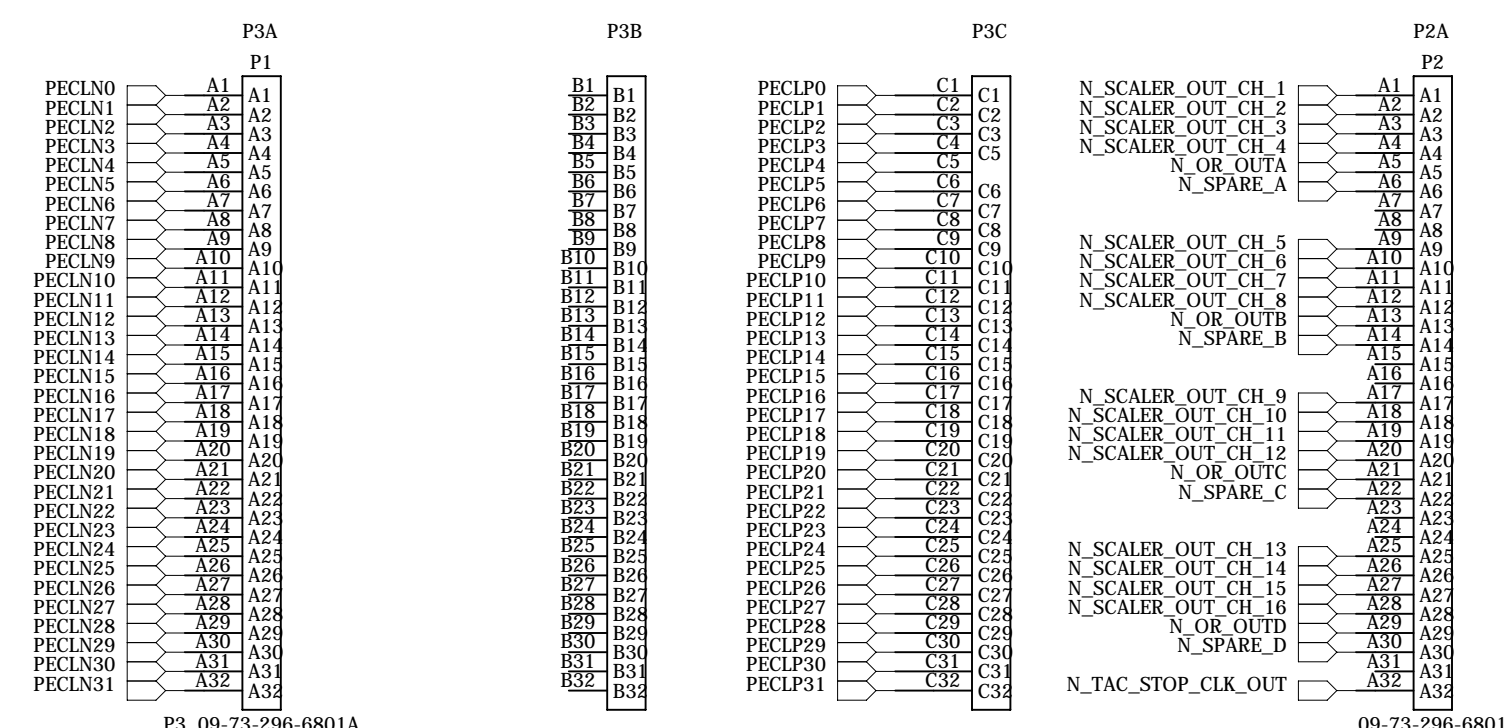
Note

For historical reasons, some of the "Back of Crate" cards such as the TAC_Adaptor, TAC_2015 (TRIG-TAC) and QTBOC_2009 cards, have backplane connector pinouts that swap signal names on rows A and C when compared to the QT32 Mother Board backplane connector pinout. For consistency, this QT Interface board will continue this convention.

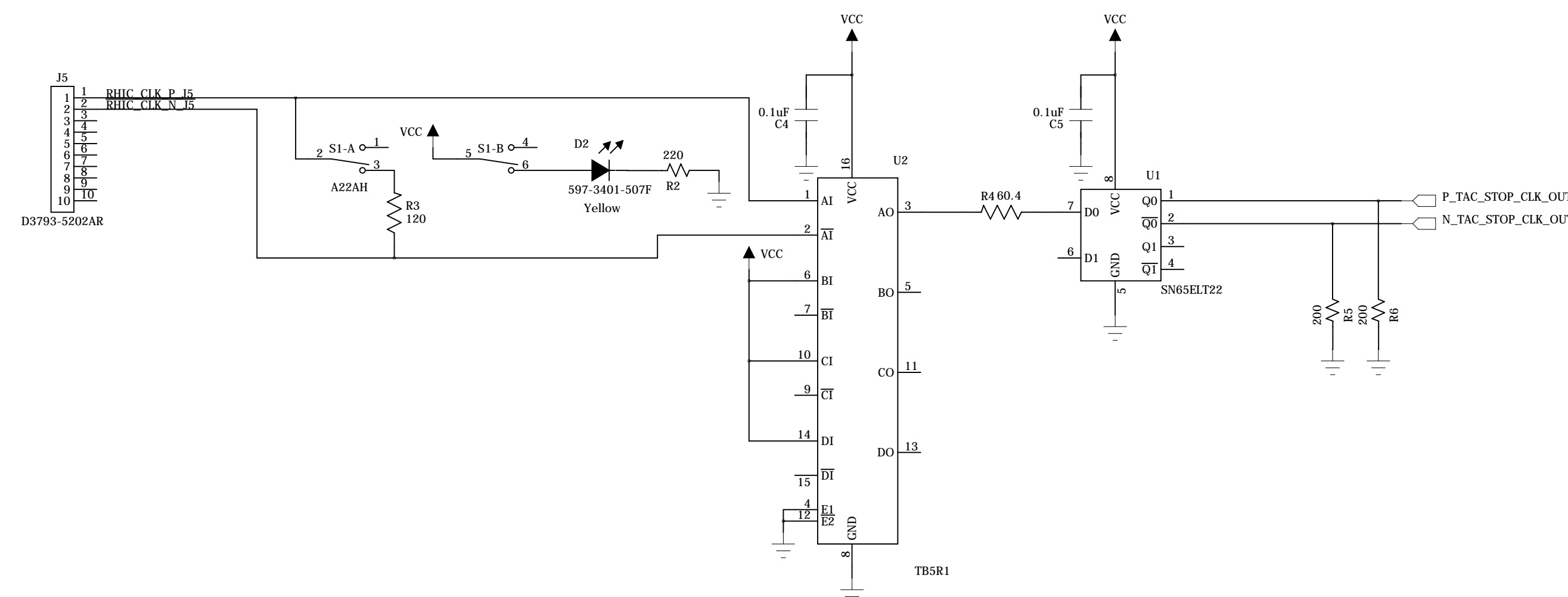
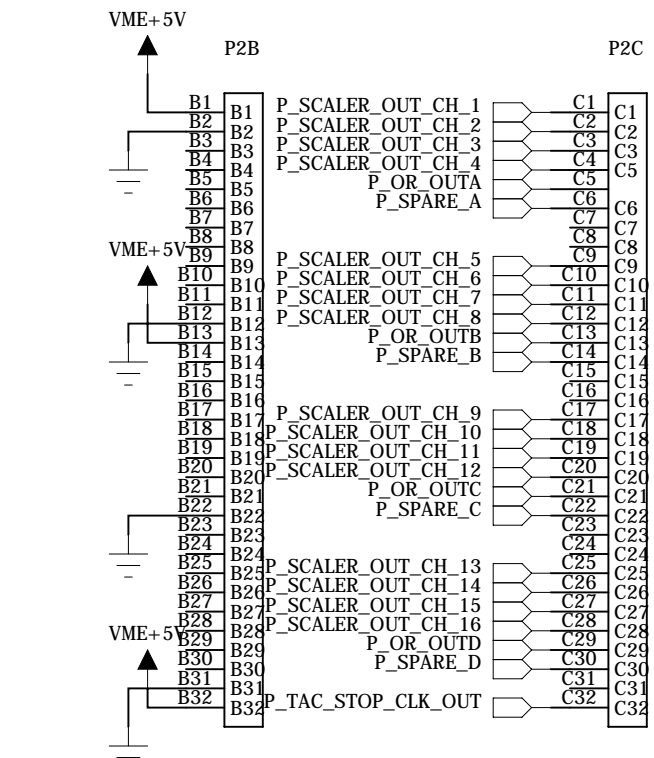
REVISION RECORD			
LTR	ECO NO:	APPROVED:	DATE:
REV B	NIM Logic	T. Camarda	SEP 2018



VME P3 QT Data



VME P2 Connector



D

D

C

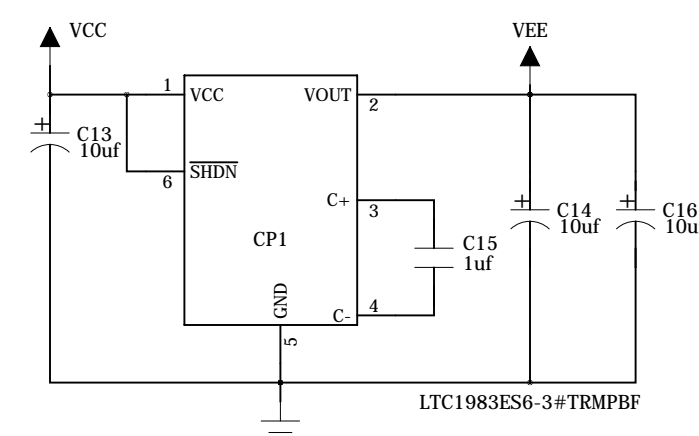
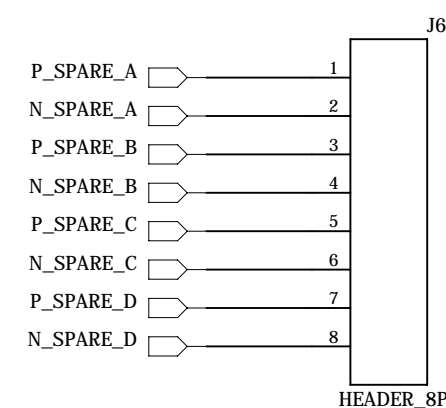
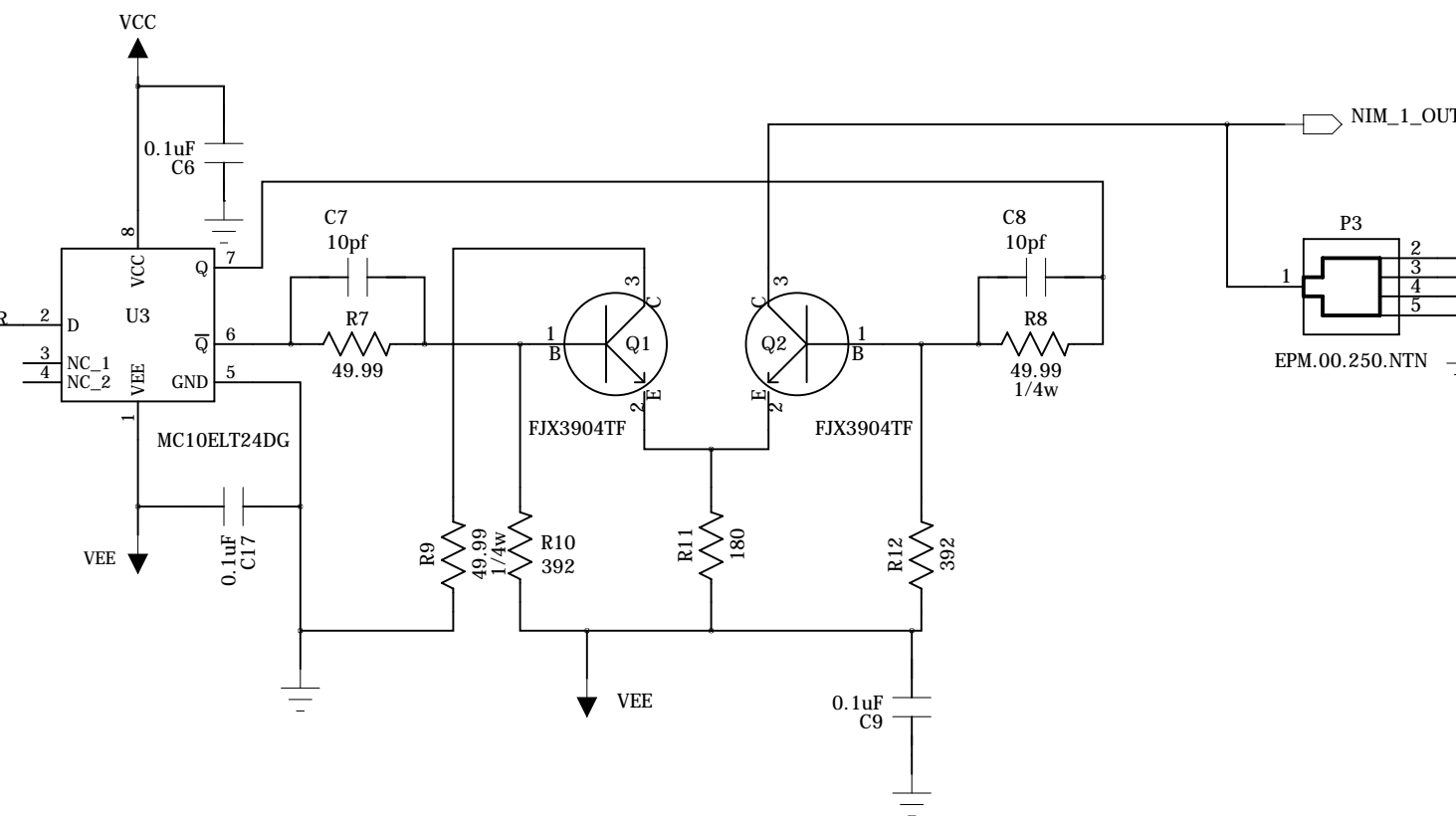
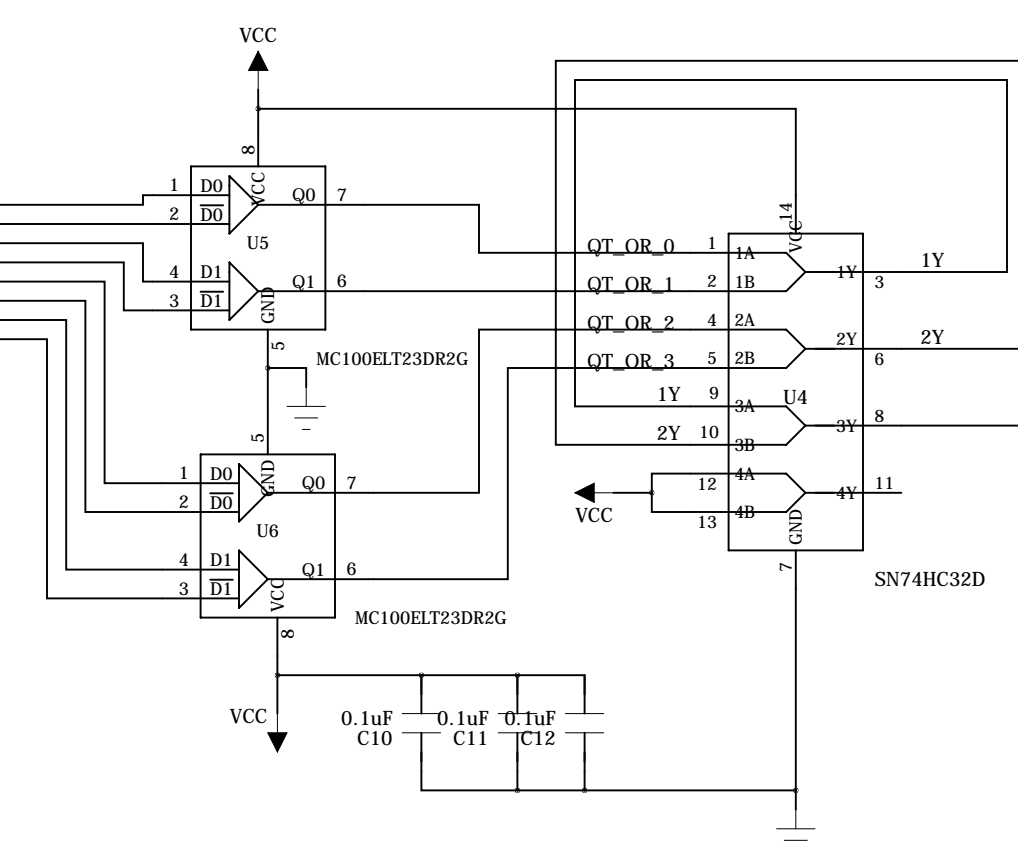
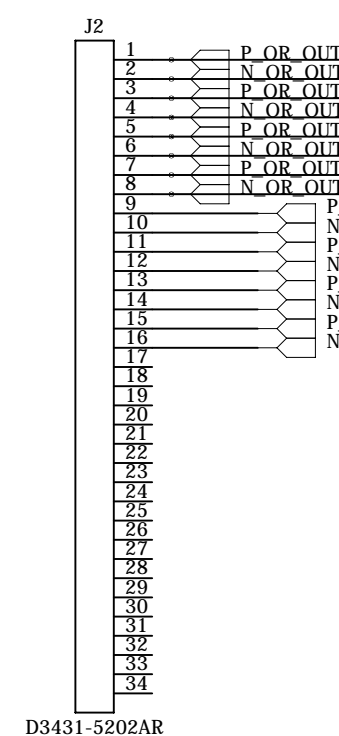
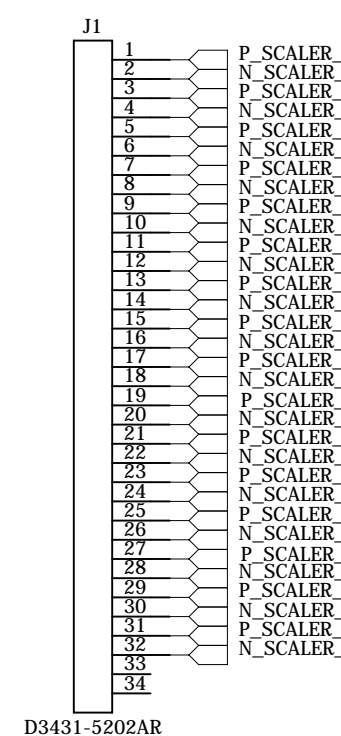
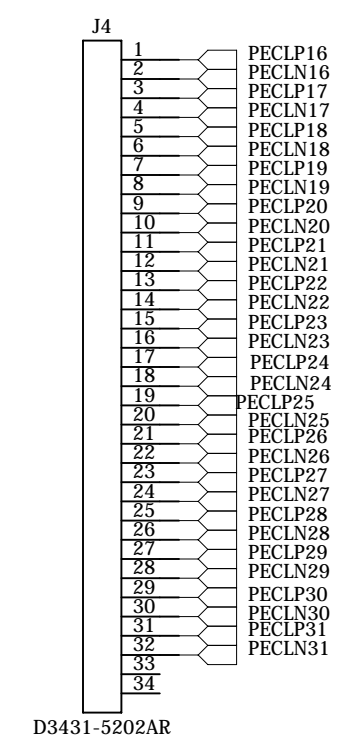
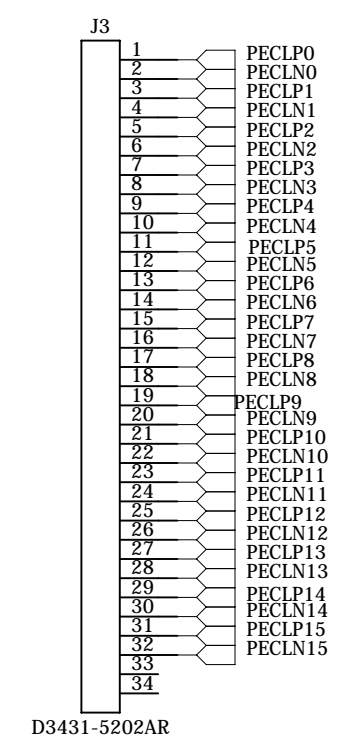
C

B

B

A

A



COMPANY: BROOKHAVEN NATIONAL LABORATORY

TITLE: QT12

DRAWN: BNL	DATED: 2017
REVISED: T. Camarda	DATED: 10/3/2018
QUALITY CONTROL:	DATED:
RELEASED:	DATED:

CODE:	SIZE: D	DRAWING NO: TRIG-QT12-SCH	REV: -
SCALE:		SHEET: 1 OF 1	