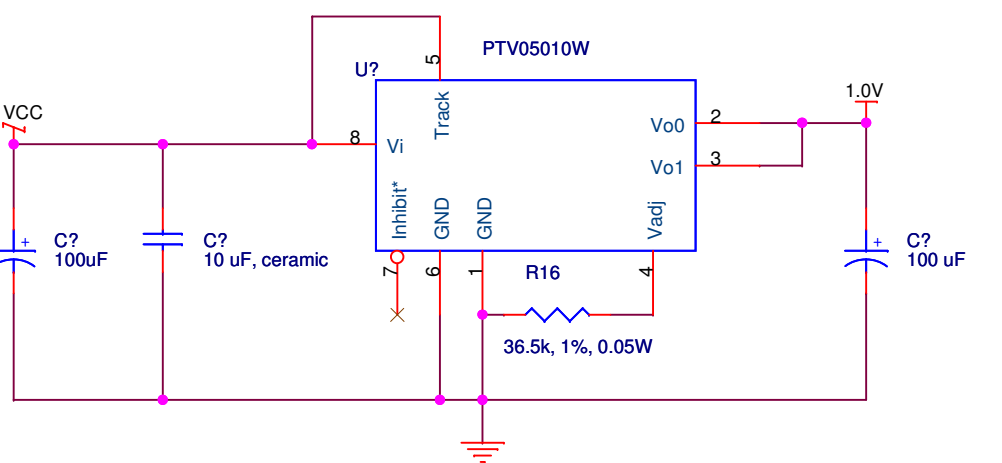
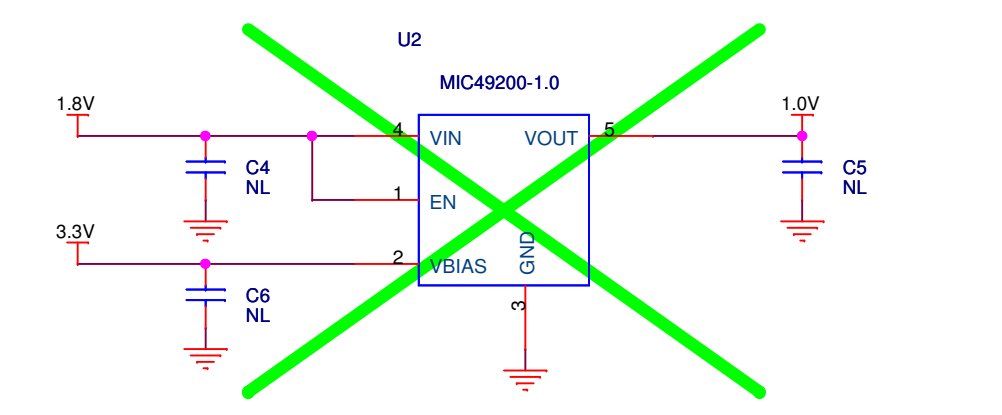
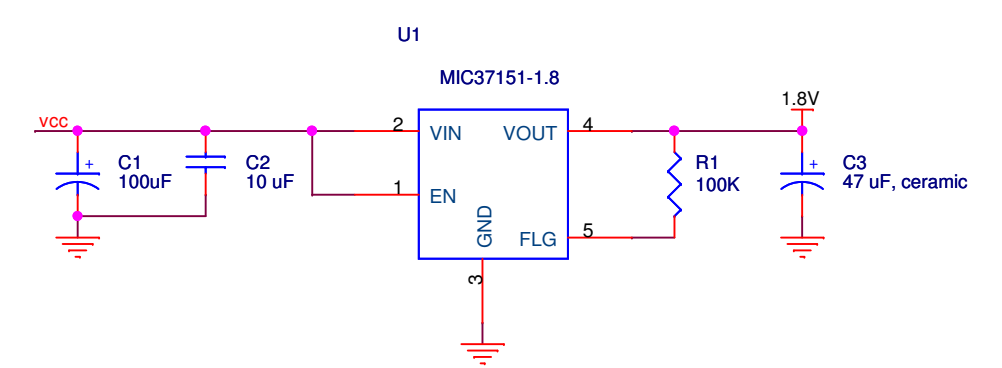
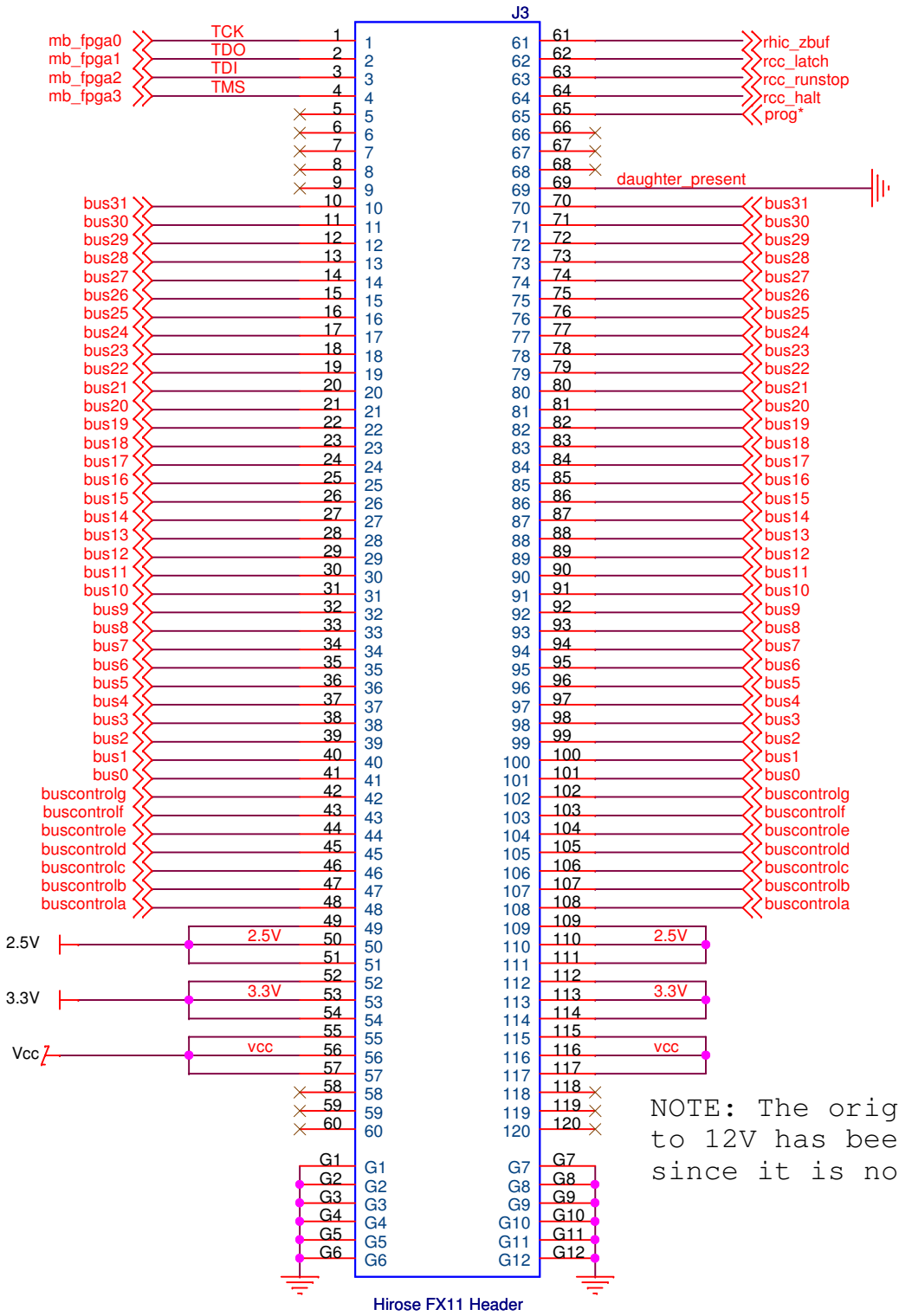


NOTE: These pins go to the TCUR, where they are NOT CONNECTED to anything, so they have been left unconnected here too.



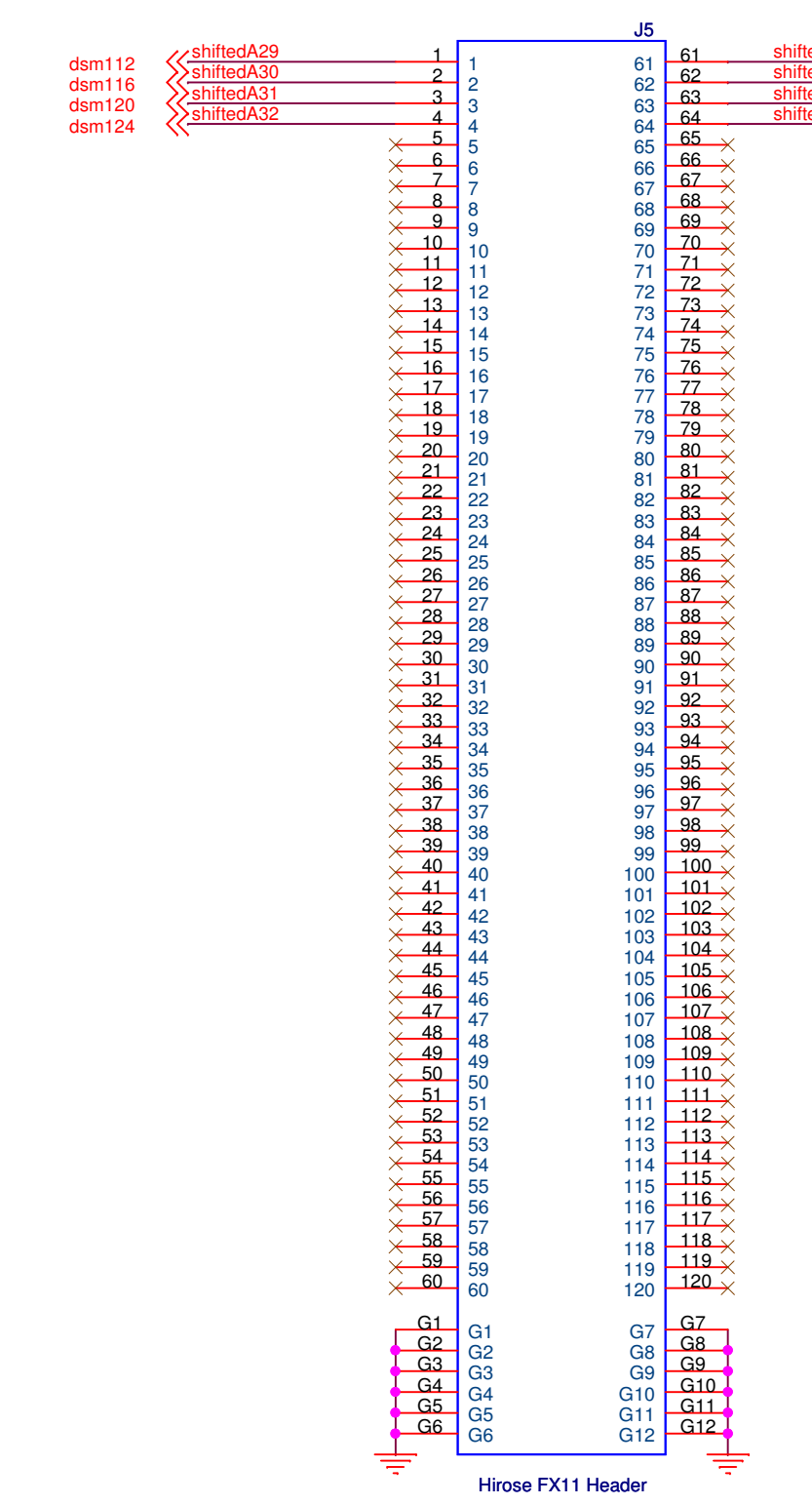
NOTE: The original 1.0V regulator could not provide enough current so it was replaced with the PTV05010W from Texas Instruments. All of parts U2, C4, C5 and C6 are NO LOAD. The replacement regulator connectors to pads 3 (GND) and 5 (1.0V) of the old U2 footprint. The remaining U2 pads have no connection. For the PTV05010W to work properly the 36.5k resistor MUST be connected directly between pin 4 (Vadj) and pin 1 (GND).



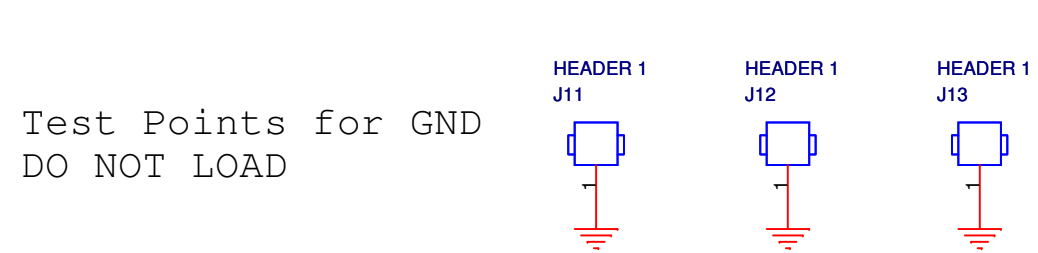
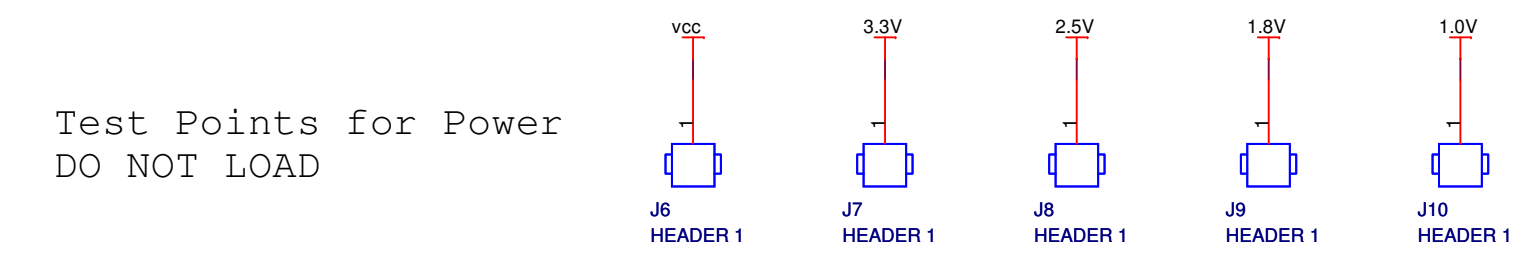
NOTE: The original connection to 12V has been removed, since it is no longer needed.



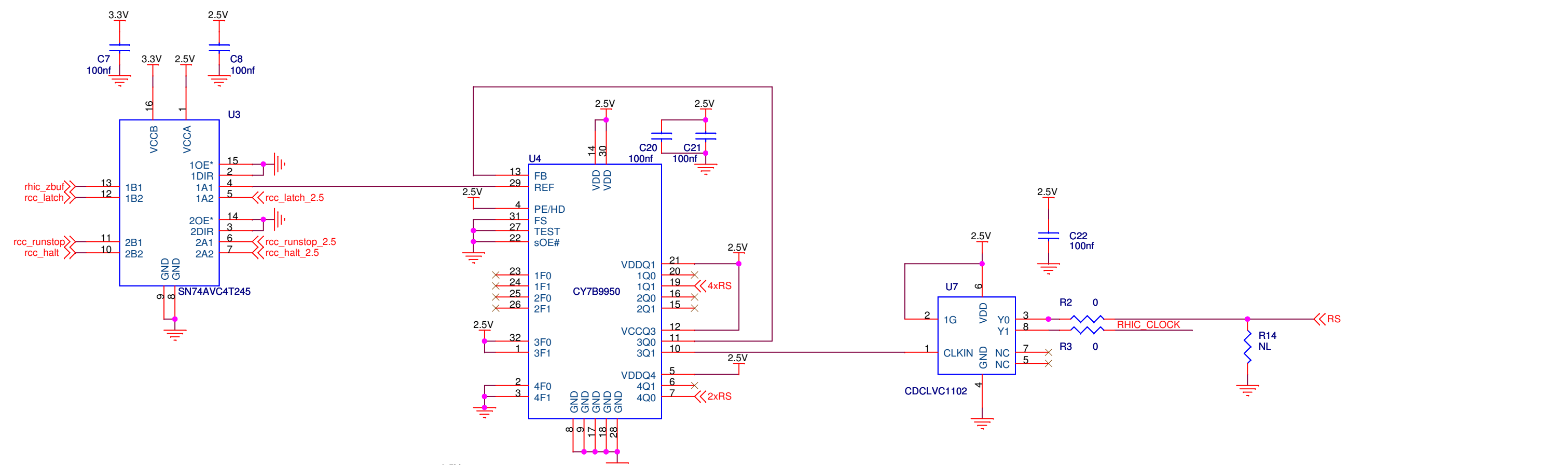
NOTE: These pins go to the LAN chip on the Motherboard. That functionality will not be implemented so these pins are being left unconnected.



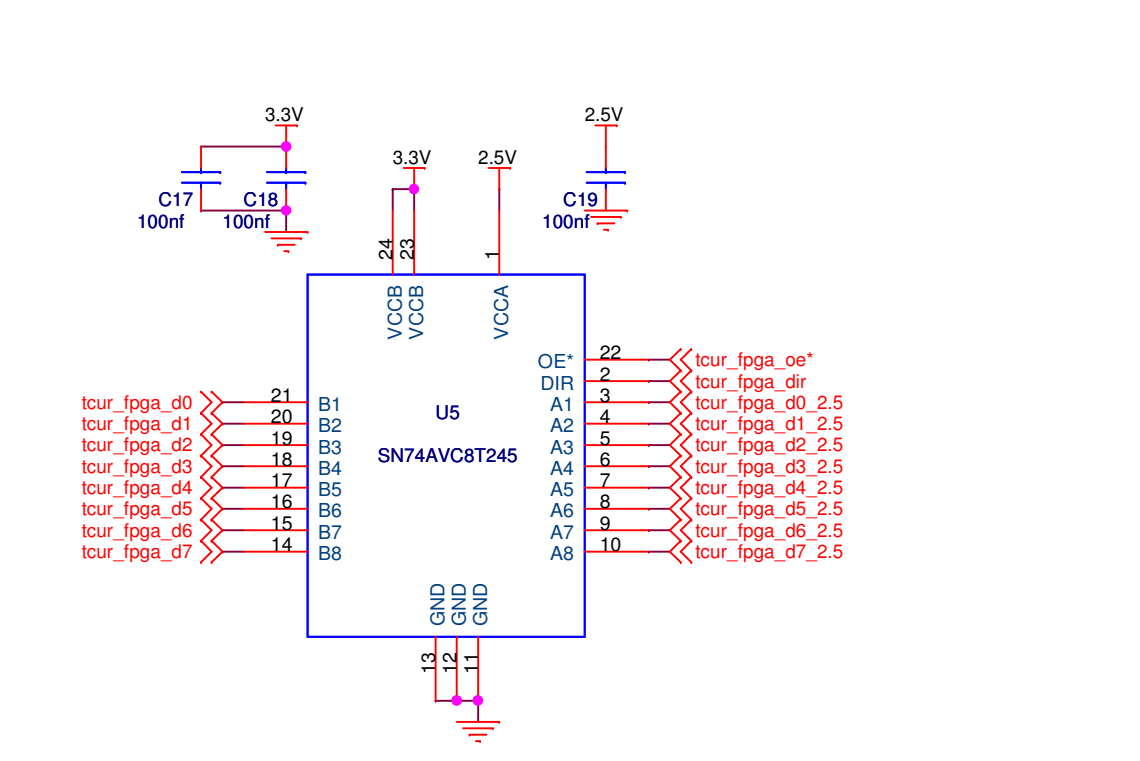
NOTE: These pins go to the RAM chip on the Motherboard. That functionality will not be implemented so these pins are being left unconnected.



3.3V → 2.5V



3.3V ↔ 2.5V



3.3V ← 2.5V

